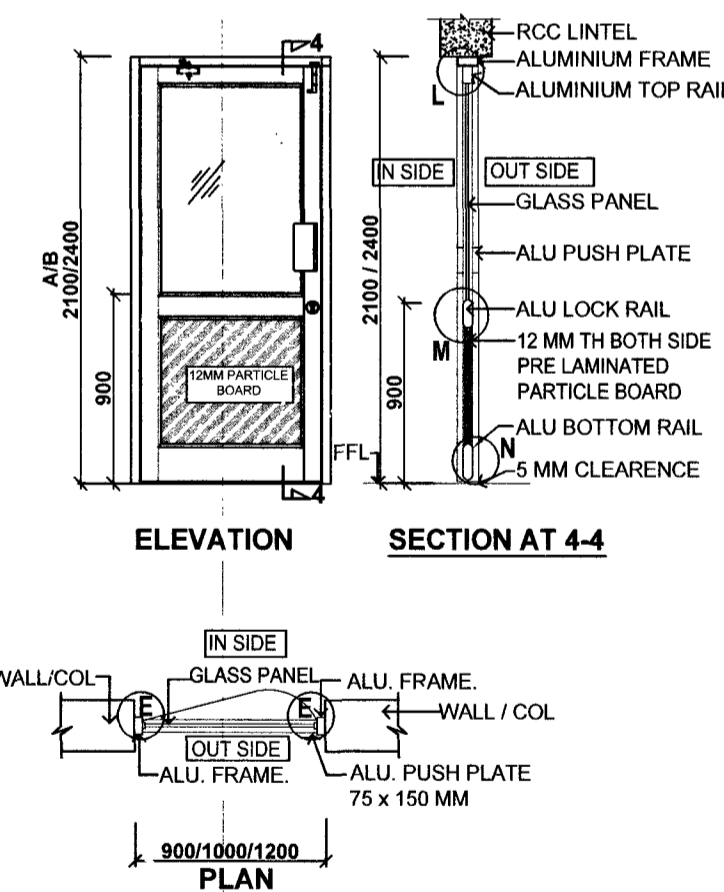
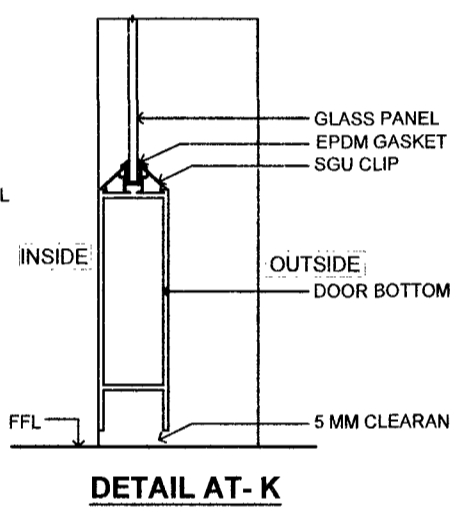
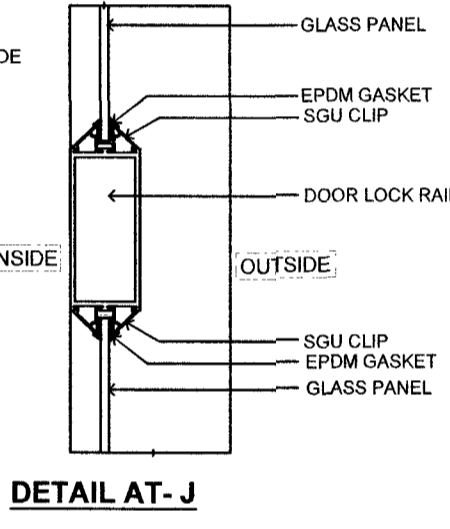
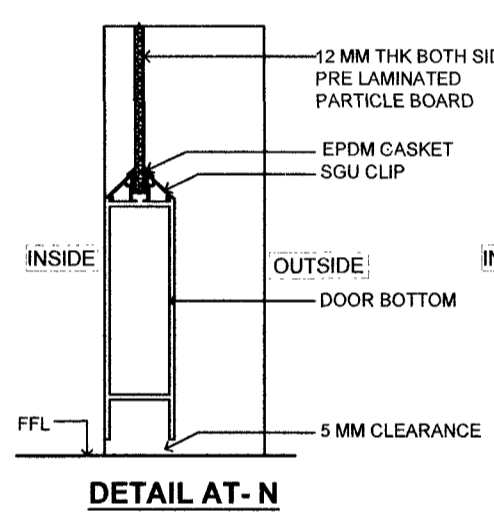
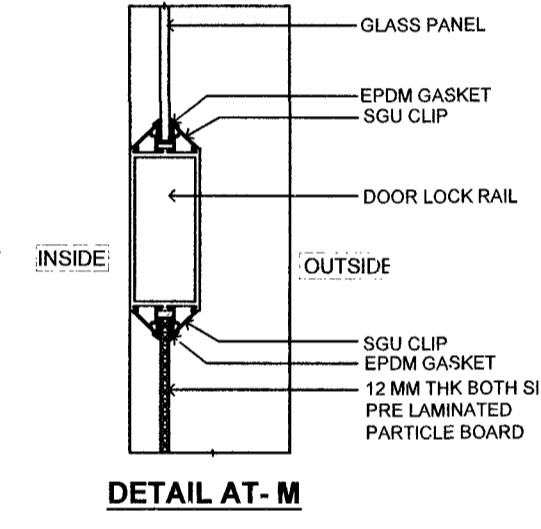
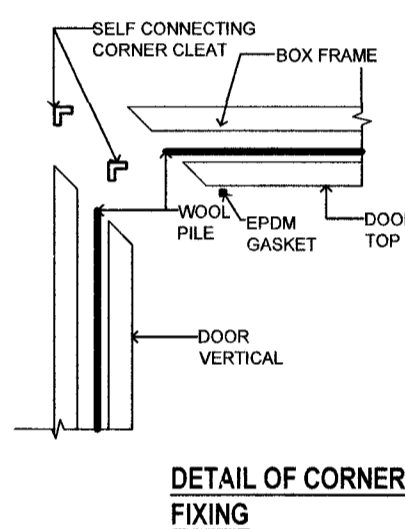
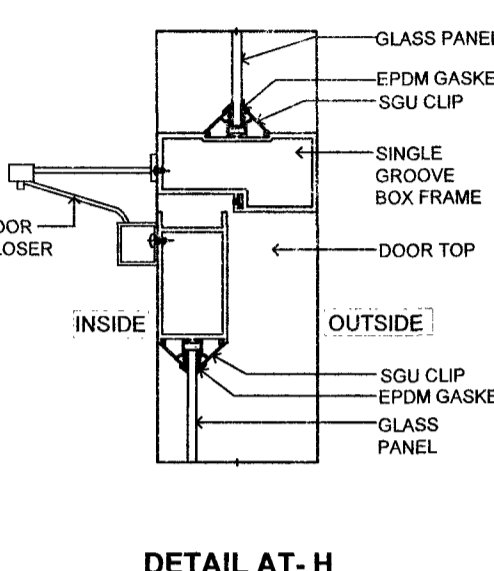
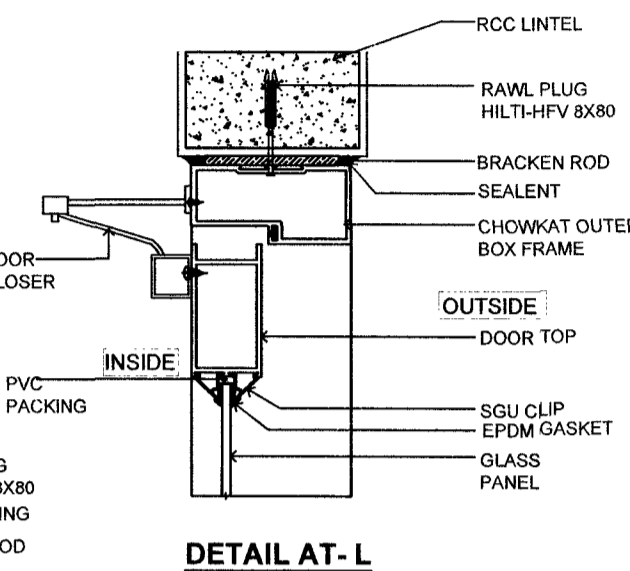
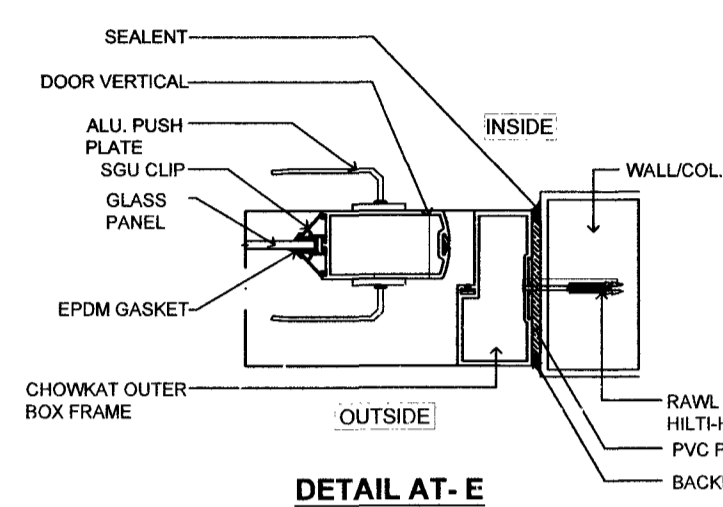
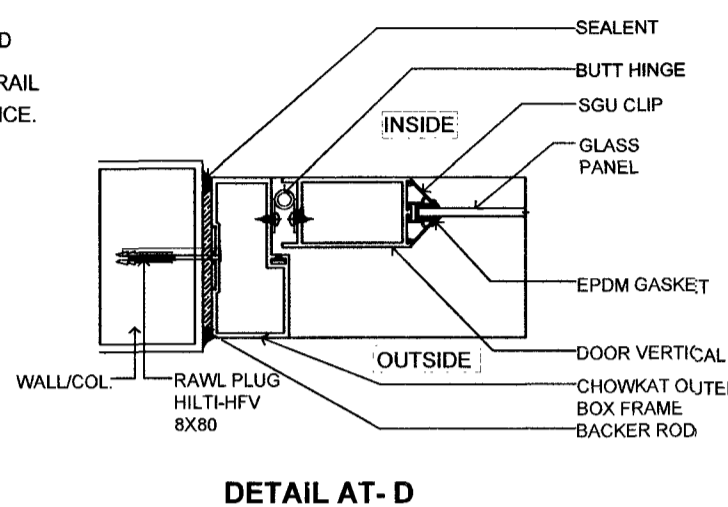
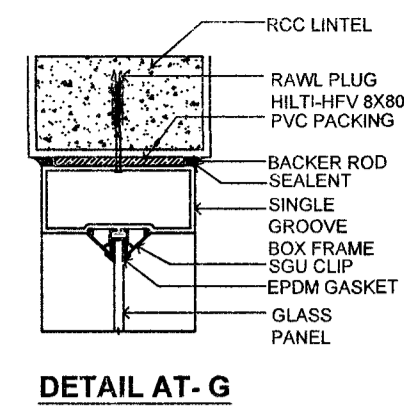
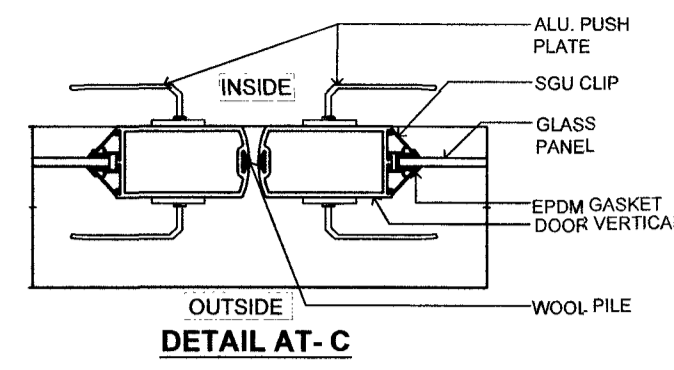
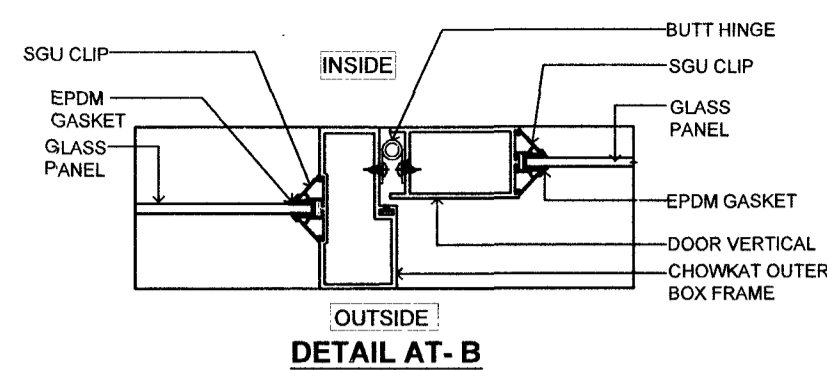
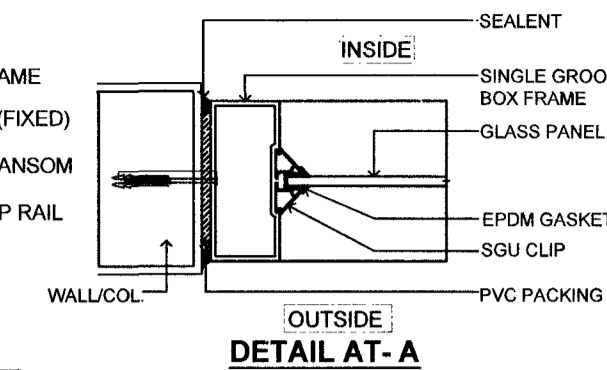


NOMENCLATURE	SIZE	NOMENCLATURE	SIZE
ALDP 12X	1200 x 2400	ALDP 12Y	1200 x 2550
ALDP 10X	1000 x 2400	ALDP 10Y	1000 x 2550
ALDP 9X	900 x 2400	ALDP 9Y	900 x 2550
NOMENCLATURE	SIZE	WITH FAN LIGHT	
ALDP 12Z	1200 x 2700		
ALDP 10Z	1000 x 2700		
ALDP 9Z	900 x 2700		

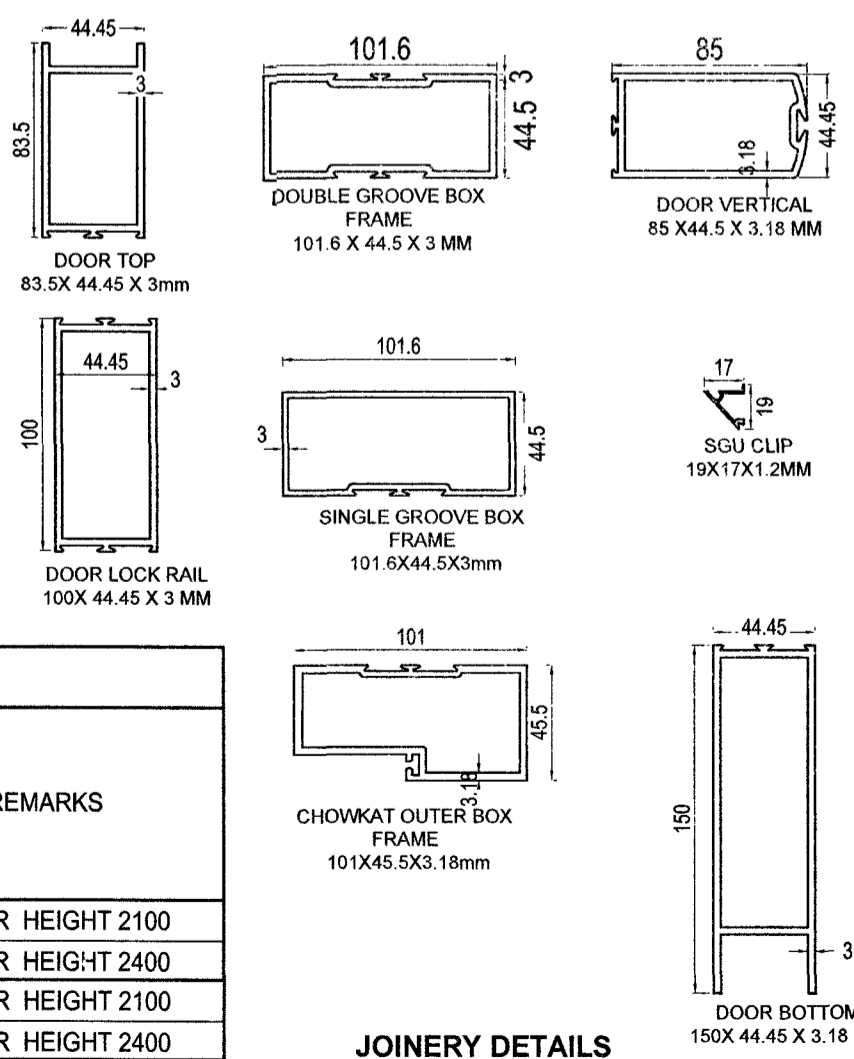


NOMENCLATURE	SIZE
ALDP 12A	1200 x 2100
ALDP 10A	1000 x 2100
ALDP 9A	900 x 2100
NOMENCLATURE	SIZE
ALDP 12B	1200 x 2400
ALDP 10B	1000 x 2400
ALDP 9B	900 x 2400



SL NO	SECTION DESCRIPTION	SECTION NO	LENGTH IN MM	WIDTH IN MM	THICKNESS IN MM	WEIGHT IN Kg / M
1.	SINGLE GROOVE FRAME	20067	44.5	101.6	3.0	1.777
2.	DOUBLE GROOVE FRAME	20066	44.5	101.6	3.0	1.924
3.	DOOR TOP	19508	83.5	44.45	3.0	2.646
4.	DOOR BOTTOM	19584	150.0	44.45	3.0	2.646
5.	DOOR LOCK RAIL	19653	100.0	44.45	3.0	1.679
6.	SGU CLIP	19377	19.0	17.0	0.90	0.124
7.	DOOR VERTICAL	19509	85	44.45	3.18	2.050
8.	CHOWKAT OUTER FRAME	19624	101	45.5	3.18	2.451

SL. NO.	DESCRIPTION OF DOOR	SS BUTT HINGE 100 LONG	DEAD LOCK	SS TOWER BOLT DIA 10 MM SIZE 150 MM LONG AT TOP	SS TOWER BOLT DIA 10 MM SIZE 200 MM LONG AT BOTTOM	ALU PUSH PLATE 75 x 150 MM	DOOR CLOSER	DOUBLE LEGGED ALUMINIUM ANODISED FLOOR DOOR STOPPER WITH RUBBER	REMARKS
1	DOOR SINGLE SHUTTER	3	1	1	1	2	1	1	FOR HEIGHT 2100
		4	1	1	1	2	1	1	FOR HEIGHT 2400
2	DOOR DOUBLE SHUTTER	6	1	2	1	4	2	2	FOR HEIGHT 2100
		8	1	2	1	4	2	2	FOR HEIGHT 2400



- NOTES**
- TOLERANCE OF 5 MM ON OVERALL SIZE OF DOOR FRAME ON EITHER SIDE (HORIZONTAL & VERTICAL) SHALL BE PERMITTED AFTER ALLOWING PLASTER ON MASONRY/CONCRETE SURFACES.
 - AFTER FIXING THE DOOR IN POSITION GAP BETWEEN WALL AND DOOR SHALL BE SEALED WITH SILICON SEALANT AND BACKER ROD OF MAKE 'SUPREME' OR ITS EQUIVALENT OF 6 TO 8 MM DIA AS PER MANUFACTURERS INSTRUCTIONS.
 - DRAWINGS ARE PREP USING JINDAL EXTRUSIONS, HOWEVER THE ALUMINIUM EXTRUSIONS CAN BE USED EITHER OF JINDAL OR HINDALCO OR ANY EQUIVALENT MAKE AS LISTED IN TENDER.
 - ALL THE ALUMINIUM EXTRUSIONS/SECTIONS SHALL BE POWDER COATED WITH 50 TO 60 μ OF APPROVED COLOUR.
 - MAKE & SPECIFICATION OF HIGH PERFORMING GLASS WHICH REDUCES DIRECT/INDIRECT HEAT FOR DOOR (SGHS-SOLAR HEAT GAINING COEFFICIENT), (VLT-VISUAL LIGHT TRANSMISSION) VLT>35, SHGC<0.45 SHGC<0.45 DOOR BALCONY SHGC<0.45, VLT>38.
 - NO JOINERY SHALL BE PERMITTED TO FIX WITH ANGLES AND SCREWS.
 - FABRICATION SHOULD BE DONE WITH APPROVED FABRICATORS. NO FABRICATION ON SITE SHALL BE ALLOWED.
 - WEIGHT AND SIZE OF ALL ALUMINIUM DOORS SHOWN IN THE TABLE ARE MINIMUM. IN CASE OF NON AVAILABILITY OF THESE SECTIONS IN THE MARKET, THE CONTRACTOR SHALL CHECK AND PROVIDE THE SECTIONS WITH WEIGHT MORE THAN THE MINIMUM SPECIFIED WEIGHT OF APPROVED MANUFACTURERS.

S No	DATE	DESCRIPTION	INITIAL
REVISIONS			
OPENABLE ALUMINUM DOORS			
PLAN, ELEVATION, SECTION AND DETAILS			
Date	29-08-2022	CHIEF ENGINEER (NAVY)	Sheet No
Drawn	NK VIKRAM	VISAKHAPATNAM	2 / 2
Ckd		ZONE	
Scale			
REF DRG NO : CEVZ / 2022 / TD -06			
AAD (Arch)		Jt Director (Arch)	Director (Arch) For Chief Engineer